

North West Masters in Teaching and Learning

All you need to know to become a participant

 <p>nwmtl north west masters in teaching & learning</p>	 <p>Edge Hill University FACULTY OF EDUCATION</p>	 <p>MANCHESTER 1824 The University of Manchester</p>	 <p>Manchester Metropolitan University</p>
 <p>University of Chester</p>	 <p>University of Cumbria</p>	 <p>Liverpool Hope University</p>	 <p>liverpool JMU</p>

Enrol for the Masters in Teaching and Learning as an NQT or newly appointed head of department (see eligibility criteria for details).

Study in your workplace in partnership with one of the North West's universities and receive school-based support from your MTL coach and HEI tutor.

www.nwmtl.org.uk

Welcome to the North West Masters in Teaching and Learning (NWMTL)

The NWMTL consortium consists of 7 universities, local authorities and schools (including training schools) in the NW that have worked together to develop a new, fully funded Masters Degree in Teaching and Learning.

The vision of the Masters in Teaching and Learning (MTL) is that participating teachers will become highly effective practitioners, enabling children and young people to realise their potential, regardless of their age, abilities or background. World class teaching is characterised by a sophisticated understanding of effective classroom practice, deep professional understanding and insightful engagement with children, young people and their parents and carers.

What is the MTL?

The MTL programme is based on flexibility and personalisation of provision so that it can be tailored to fit your developing capacities and reflect your professional needs and experiences of your school or setting. It involves practice-based learning opportunities, drawing on a wide range of expertise both within and beyond your work setting, where you will learn from reflective practice in collaboration with colleagues. You will participate in problem solving and critical thinking and be encouraged to construct your own evaluations by exploring ideas based on prior knowledge and experience and applying these to new situations relevant to your own school context.

While the programme for the MTL is common to all the Higher Education Institutions (HEIs) in the NWMTL Federation, you will register with one university. Support will be provided by a tutor from the HEI and a school-based coach who will work in partnership.

Who is eligible for the MTL?

- Admission to the fully funded programme is subject to the eligibility criteria defined by the Training and Development Agency (TDA).
- MTL is open to two groups:
 - newly qualified teachers (NQTs) working in maintained schools or settings in the NW and who started their employment from September 2009.
 - MTL newly appointed heads of department who take up post from September 2009, in National Challenge schools (and equivalently, intensive Keys to Success/Pathways to Achievement schools in City Challenge areas), and newly appointed heads of department who take up post from September 2010, in secondary schools facing challenging circumstances. These people are deemed eligible for MTL because the school was able to offer the package for attracting new teachers into challenging schools, as announced in the New Opportunities white paper, regardless of whether the school has accepted the package.
 - N.B. Heads of Department (HoD) for the purposes of MTL eligibility are school teachers with responsibility for a curriculum area and for which they are in receipt of a teaching and learning responsibility (TLR). The head of department must hold QTS to be eligible. The definition of curriculum area is broad and encompasses roles such as Head of Year, Leader for Inclusion and a teacher with responsibility for pastoral care.

- If you have any queries around eligibility, please contact **nwmtl@chester.ac.uk** where NWMTL enquiries are being handled on behalf of the consortium.

When does it start?

- Phase one of the MTL programme starts in the Summer Term for NQTs (term 3 of the induction year) and the Autumn term (September) for HODs. It is expected that most people will complete the three phases of MTL within three years.

How much will the MTL cost my school?

- The Masters in Teacher and Learning is **fully funded** for students registered in 2010-11, with a total of £6806 per student being available for the school-based elements of students' learning. This unit of funding will see up to £1032 released to schools for each student in the first phase of their course and up to £3300 and £2474 in phases 2 and 3. This can be used to cover coaching, student release and other costs as necessary.

What is expected of the school-based coach?

- The expectation is that around half the funding which schools receive for MTL is to be used for in-school coaching. In addition, two days' training for coaches is provided for which the school will receive cover costs and travelling expenses. Trained MTL coaches are eligible for fully funded Masters Level accredited PG certificated courses. For further details about what is expected of MTL coaches and a job specification please refer to the coaching section of the NWMTL website www.nwmtl.org.uk

How do I apply?

- Enrolment is online via the NWMTL Website which can be accessed at www.nwmtl.org.uk
-

Do I have a choice of University at which to do my MTL?

- At the online enrolment stage you will be asked to indicate your preferences of HEI with which you would wish to register. Wherever possible you will be allocated your first choice but in the instance of HEIs reaching their allocated numbers you will be offered your second choice (subject to availability).
 - It is recommended that you identify a school based coach with senior colleagues before enrolling, as you should ideally include this information on the online enrolment form. (NB: If you have problems in allocating a potential coach you can still enrol without this information but it may delay your registration with the HEI.) You should also discuss your preferred HEI before completing the enrolment form.
 - On completion of a successful online enrolment, you will receive an email confirming the enrolment. NWMTL will keep in contact with you regularly by email until the enrolment portal closes (see website for details of these dates). After this first stage of enrolment, your details will be passed to the HEI of your choice and you will be asked to take part in a secondary enrolment process with that HEI as a postgraduate student on the MTL programme. Once all enrolment processes have been successfully completed, funding for the MTL is guaranteed.
 - The common MTL programme has been developed by the NW Universities Federation and is common to each HEI. The chosen university is responsible for the assessment and award of the MTL.
-

Phase One: Developing

In Phase One you will build on your professional experience and develop your Masters Level enquiry skills through practitioner research activity that investigates the impact of your practice on the outcomes of children and young people or in the case of a HoD the area on which you lead. You will take part in learning opportunities to address your individual professional needs and develop your Masters Level skills of enquiry and critical engagement with the evidence base.

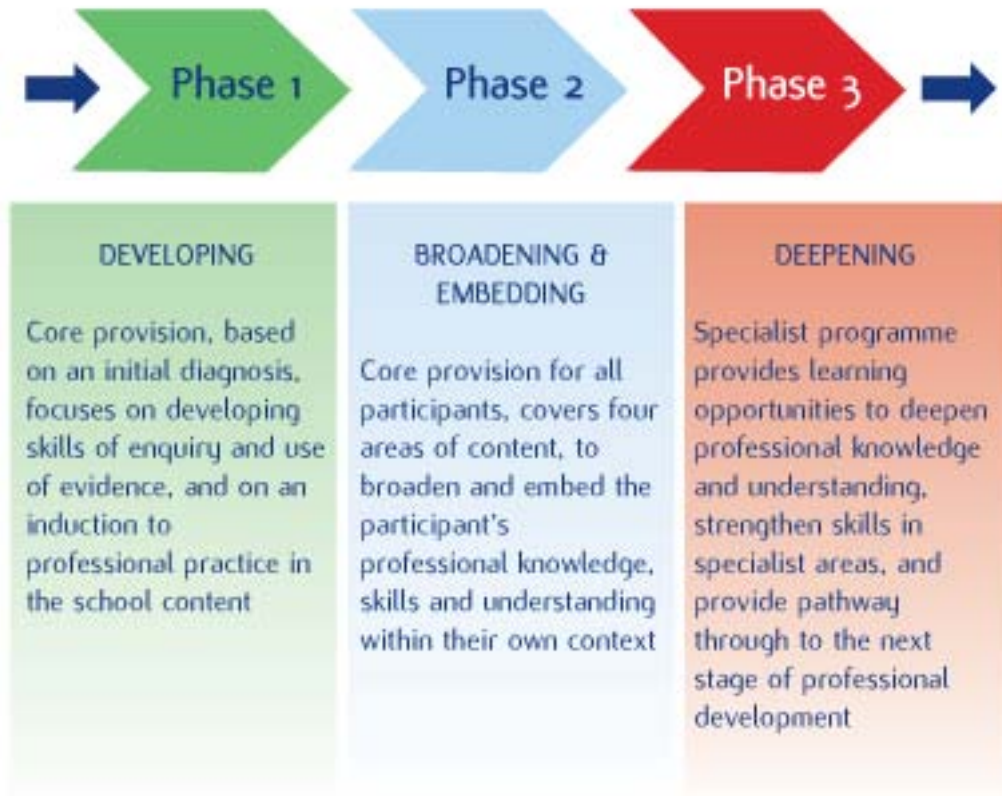
Phase Two: Broadening and Embedding

In Phase Two you will broaden and embed your professional practice with particular reference to the subject(s) and age phase you are teaching or for a HoD the area in which you lead. This Phase involves engagement with four inter-related areas of content: teaching, learning and assessment; subject knowledge for teaching and curriculum development; how children and young people develop; leadership, management and working with others. This Phase aims to develop your independent professional development planning including determining what will be your focus for Phase Three.

Phase Three: Deepening

At Phase Three you will further develop your practice within a specialist focus of school subject, age phase or aspect of teaching or for a HoD the area within which you lead. It aims to develop your confidence and ability to contribute to collaborative learning in your workplace and in the wider professional community.

MTL Programme



MTL Programme content

Phase One		
Module	Title	Credits
1	MTL Reflecting on professional practice 1	30
2	MTL Reflecting on professional practice 2	10

Phase Two		
Module	Title	Credits
3	MTL Teaching, learning and assessment	20
4	MTL Curriculum development	20
5	MTL Inclusive practice	20
6	MTL Collaboration and leadership	20

Phase Three		
Module	Title	Credits
7	MTL Professional enquiry 1	30
8	MTL Professional enquiry 2	30

(This will be the same in all consortium universities)

Accreditation of Prior Certificated Learning (APCL)

You can claim APCL in certain, limited circumstances up to the value of 60 Masters level credits against modules within the MTL in one of the following ways:

1. Up to 30 credits into “Phase 1: Module 1” and 30 into “Phase 3: Module 7”;

Or,

2. 30 credits into “Phase 1: Module 1” and 20 into any one module of “Phase 2”;

Or,

3. 20 credits into any one module of “Phase 2” and 30 into “Phase 3: Module 7”

IMPORTANT: If you have PGCE Masters level credits, you can only transfer a maximum of 30 PGCE credits into the MTL programme.

NB. In the enrolment for APCL, you will be requested to show how the learning outcomes of your PGCE being claimed as 30 credits align to the learning outcomes of the MTL module 1. (APCL into Phase 2 and 3 will happen before you embark on that module as it is understood that you cannot predict what might be most relevant at this stage. However, if you are a department head embarking on the MTL programme – you may well decide where and what you want to APCL at the start, given your previous experience.)

What is the MTL teaching, learning and assessment strategy?

You will be supported by a MTL trained school based coach. He or she is an experienced teacher who engages in professional consultations regarding your professional practice in relation to the Professional Standards for Teachers and the MTL programme learning activities and outcomes. Your coach will also assist you in networking within and beyond the school. In parallel you are also supported by academic tutors from the University. The academic tutor will help you develop critical thinking and academic writing to support your Masters Level work.

Your personalised pathway will be negotiated between you, your coach and tutor. Together you will decide upon and sign a formal written learning agreement for each module that is used as a basis for your professional development planning. This process

will assist in monitoring progress and relevance to your developing strengths, specialisms and areas for development.

Within this collaborative and integrated approach, the school based coach will offer feedback on progress towards the MTL learning outcomes for each phase whilst the HEI tutor will undertake summative assessment. Together, they will support you in gathering evidence of practice in which you have been personally involved. On completion of an agreed assessment format, you will have demonstrated the required range of professional knowledge and skills.

The MTL is a pass/fail award. MTL assessments are driven by the innovative nature of the Masters in Teaching and Learning and draw upon the three elements below:

- engagement with literature and research in order to explore the most effective teaching and learning strategies
- ensuring that the effectiveness of teaching and learning has a positive impact on the outcomes for children and young people
- developing and working as a lifelong learner continually enhancing your own professional practice

The assessments within the programme are generally designed to focus on a work-based product or process integral to practice that is part of your normal professional development. You will produce a critical commentary through writing or an alternative presentational format that includes engagement with, evaluation and application of relevant literature and theory. Your critical commentary will report on small-scale empirical investigations with clear conclusions leading from a systematic collection and analysis of data or it will develop a conceptual argument in relation to your developing practice and how it impacts upon learning.

Preparing for enrolment

Before enrolling, make sure you have:

1. Discussed the MTL with senior colleagues and have identified who will be your coach. You will need the email address of your coach. If your school has not yet been able to identify a coach you can still enrol and explain your circumstances online;
2. decided which of the universities you would prefer to work with (and which is your second choice);
3. know how many M Level credits you have already acquired.

We look forward to receiving your enrolment for this new and exciting Masters Programme.

www.nwmtl.org.uk
